

SSF

White Paper

Implementing Assets In EvolveFM

ANSWERING THE IMPLEMENTATION DILEMMA WITH 3 EASY TECHNIQUES

EvolveFM™ 2013



This paper will provide information about asset implementation techniques in EvolveFM. There are three implementation techniques used to manage the physical assets within your facility and choosing the right method can help users have greater success working with assets in Evolve.

The Asset Implementation Dilemma

Every facility has different types of assets to manage and those assets can range from items such as keys, artwork, and cell phones to HVAC equipment, parking areas, and roofs... And here lies the implementation dilemma. How you choose to implement these types of assets will affect your overall asset management experience in EvolveFM, so how do you know which implementation technique to use?

Understanding the 3 Implementation Techniques

To help understand how assets are implemented in CAFM, outlined below are the three asset implementation techniques used in EvolveFM. Each one includes a description of the approach, what the user experience will be, and a short list of the type of assets typically managed using the technique mentioned.

1. Non-Graphical Assets (NGA)

Non-Graphical Assets are assets that are stored as data records in the EvolveFM database and no graphical representation of the item exists on a CAD drawing.

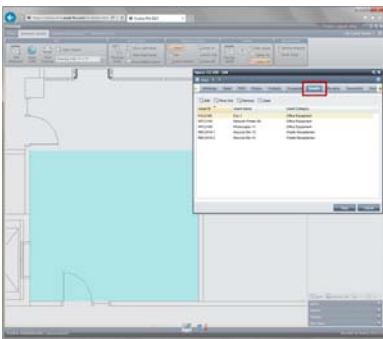
With this implementation option, a user can manage the asset data but



Simple Solutions FM

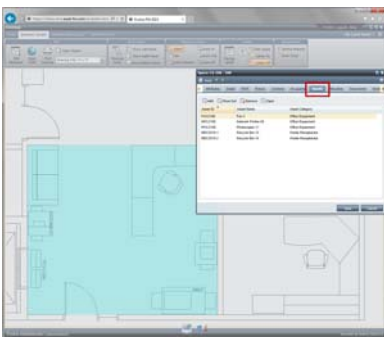
IWMS CAFM CMMS Software & Services

Non-Graphical Asset



Data related to Non-Graphical Assets assigned to a space on a drawing can be retrieved & reported while working in the EvolveFM Drawing Viewer without the need for a graphical representation of the asset on the drawing.

Graphical Non-Clickable Asset



Data relating to Graphical Non-Clickable Assets assigned to a space on a drawing can be retrieved & reported while working in the EvolveFM Drawing Viewer and this technique adds the ability to see a graphical representation of the asset on the drawing.

they cannot see the physical representation of the asset on a drawing. These types of assets usually consist of the items you need to track for Human Resource purposes, inventory purposes, and large equipment items.

Examples may include:

- Keys
- Artwork
- Cell phones
- Laptops / tablets
- Fleet
- HVAC Equipment

2. Graphical Non-Clickable Assets (GNCA)

Graphical Non-Clickable Assets are assets that are stored as data records in the EvolveFM database and are also graphically represented on a CAD drawing for viewing purposes only.

With this implementation option, a user can see the physical representation of the asset on a drawing but they cannot “touch” it or click on it. These types of assets make up the items that you need to manage, but would also find helpful to visually see on a drawing.

Examples may include:

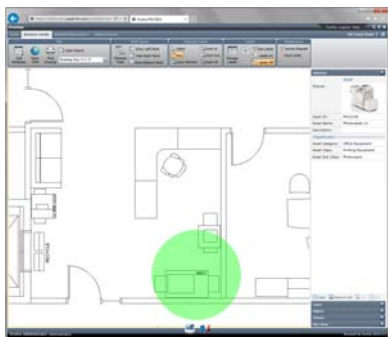
- Network Printers
- Data Jacks
- Furniture
- Parking Areas

3. Graphical Clickable Assets (GCA)

Graphical Clickable Assets are assets that are stored as data records in the EvolveFM database and are also graphically represented on a CAD drawing for viewing and direct data retrieval purposes, meaning a user can click an asset on a drawing to retrieve data directly from the asset itself.

With this implementation option, a user can see the physical representation of the asset on a drawing and they can also “touch” the asset by clicking the asset graphic on the drawing. These types of assets make up the items that you need to manage, but you would also find helpful to click & retrieve information about the selected asset.

Graphical Clickable Asset



Graphical Clickable Assets can be selected on a drawing and data relating to the asset automatically reported in the EvolveFM Drawing Viewer. Double-clicking the asset on the drawing will retrieve the asset data record where its detailed asset data is stored.

Examples may include:

- Network Printers
- Data Jacks
- Security Cameras
- Emergency Call Boxes
- Parking Areas
- Roofs

Solving the Asset Implementation Dilemma

EvolveFM provides the ability to choose an asset implementation technique that best fits each type of asset that you need to manage. EvolveFM also provides many flexible, easy-to-use functions for working with your assets once they have been implemented in the EvolveFM CAFM application.

The decision to use a particular asset implementation technique should be made by defining both the type of asset interaction you want your users to experience, and the Evolve asset functionality that will deliver the greatest success working with your assets in Evolve.

Asset Functionality & Implementation Comparison

The chart below lists common asset functionality in EvolveFM and compares the functionality to the three asset implementation techniques. As you plan your asset management approach, use the chart below as a reference to aid you through the initial dilemma of which technique would best fit your asset implementation needs.

FUNCTION	Technique		
	NGA	GNCA	GCA
Assign assets to people, locations & spaces in Evolve	YES	YES	YES
Export / Import asset data using Evolve data grids	YES	YES	YES
Search & report on assets using Evolve data grids	YES	YES	YES
Produce Evolve data reports in PDF or EXCEL format	YES	YES	YES
Search & highlight a drawing space to locate an asset	YES	YES	YES
See a graphical representation of an asset on a drawing	NO	YES	YES
Click an asset on a drawing to view related data	NO	NO	YES
Generate a Service Request or Work Order for an asset	YES	YES	YES
Click an asset on a drawing & generate a Service Request or Work Order	NO	NO	YES

EvolveFM Software

EvolveFM, from CAFM Resources, is a low cost, easy-to-use Computer Aided Facility Management (CAFM) software solution used for:

- Space Management
- Move Management
- Asset Management
- Maintenance Management

EvolveFM is powerful, comprehensive software without the big price tag.



Simple Solutions FM

IWMS CAFM CMMS Software & Services

Summary

Each of the three asset implementation techniques in EvolveFM offers its own benefits, and the flexibility of these methods allow you to easily manage, track, and analyze the use of your organization's physical inventory of assets.

Use the information outlined in this document to plan your approach and to optimize your user's asset management experience in EvolveFM.

We're Here To Help

Simple Solutions FM offers facilities management software & service solutions that will help you make informed decisions about the space you occupy and the facilities you manage.

Contact Us

Please contact Simple Solutions FM with technical questions, a free consultation, or for a product demonstration and pricing information.

Phone: 978-263-9911

Website: www.SimpleSolutionsFM

SlideShare: <http://www.slideshare.net/SimpleSolutionsFM>

